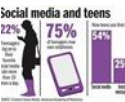


Can the Media have an impact on crime?



What is the link between Sociology and Social Policy?



University Degree/ Apprenticeship/ Gap year/ Employment



ZERO TOLERANCE POLICY

How can crime be reduced? Social explanations of reduction?

Theories of Sociology and the strengths and weaknesses?

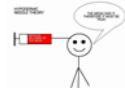


Is Sociology a Science?

The relationship between theory and methods?

The impact of state and green crime globally?

Sociological explanations



Late modernism and post modernism?

Are we passive or active participants of the media?

Crime and Deviance: What is the difference between crime and deviance? What are the Sociological explanations?



Interpreting graph



Create your own experiment: Self Report/ Correlation

What do crime figures state about ethnicity, gender and social class?

What do the statistics and patterns of crime? Are they accurate? What are the dark figures of crime?

How are ethnic groups and social classes portrayed in the media?

How is gender, sexuality and disability displayed in the media?



Research Methods: Exam



What are the secondary sources of data and the issues?

Sociological Explanations of the Media



Year 13

Who controls and selects the news that should be presented? How is news constructed?



What is qualitative research? Observation Ethnographic research Interviewing.



How does the Media impact globalisation and popular culture?



What are the quantitative research methods: Surveys Case Studies Experiments

Comparative research?

Create your own experiment: Observation

Conducting questionnaires and interviews. What are the strengths and weaknesses?

Choices in research methods: What are the ethics and practical implications?



Who controls and owns the Media?

Sources and types of data: Primary/Secondary. Quantitative Qualitative Reliability Validity

Media: What are the various types of Media that is accessible? What is the New Media?



What methods are used to research social life?



Exam practice for Education

Evaluation of policies in education

Sociological explanations of the Media

How does demographics impact family life? Fertility Birth rates Death rates The ageing population Migration



The impact of the hidden curriculum? Pupil subcultures Teacher-Pupil relationships. Identity

How has marriage changed the structure of the family? How has divorce changed the structure of the family? Has it encouraged family diversity?



Exam style question practice: 20m

What Social policy has impacted education? The tripartite system? Comprehensive schools? Education reform act.

Does gender impact educational achievement and subject choice?

What are the patterns of achievement in ethnicity? The impact of external/internal factors



What are the patterns of achievement in relation to class? Sociological explanations



What is the role of the family to the social structure? Sociological explanations.



What is the role of education in society? Sociological Explanations of the roles of education



Is domestic labour equal? Are power relations equal in the family?

Year 12

What social policies have impacted the family?

What are the strengths and weaknesses of the family explanations



Legend: Paper- Education/ Research Methods (Blue), Paper 2 - Families and Household/Media (Red), Paper 3- Crime and Deviance/ Theories and Methods (Green)